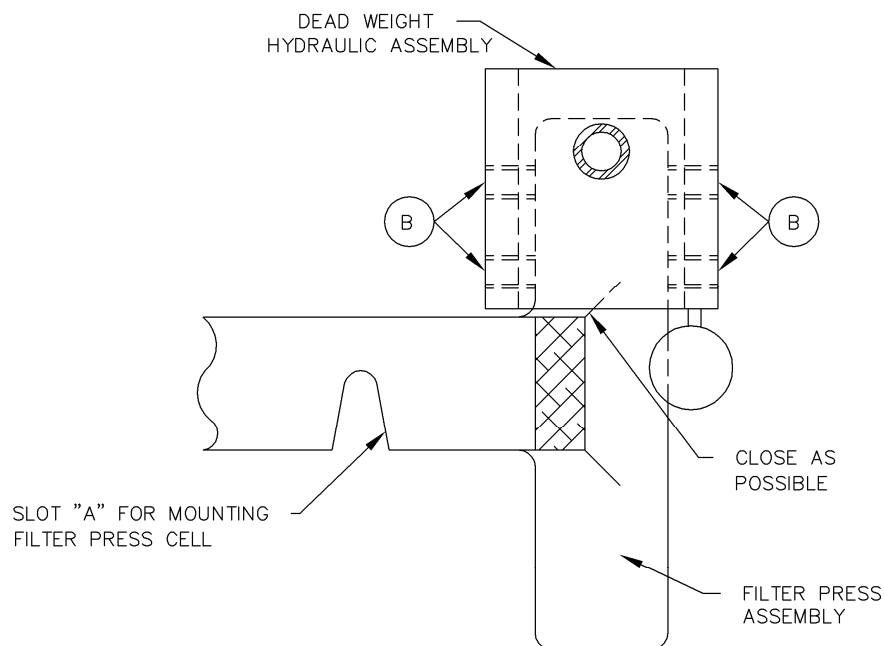


1. Place filter press assembly as shown, with slot "A" facing you. Place slot in the base of the Dead Weight Assembly over the right rear foot on the Filter Press Frame. Place the dead weight base as close as possible to the vertical posts on the filter press frame. Tighten set screws "B" so that the Deadweight Assembly is held firmly in place.
2. Screw the hose connection into the filter press top cap until tight.
3. Assemble Dead Weight and piston assembly onto cylinder.
4. Fill reservoir with water.
5. Refer to instruction 207128 API Filter Press Section 3.C "Dead Weight Hydraulic Pressure Source"

### PARTS LIST

PART NO.	DESCRIPTION
207127	Filter Press Assembly
208594	Dead Weight Hydraulic Unit
205868	25 ml Graduate
206051	Filter Paper (100 per Pkg.)
207889	1/8 Hex Wrench, Short Arm



SECTION PLAN VIEW OF FILTER PRESS